

# WAKA WAKA

share the sun



# WakaWaka Foundation

ANNUAL REPORT 2021

# Contents

Introduction	3
Our Mission	4
WakaWaka's Distributed	5
Campaigns and Donations	6
Projects	7
Governance	8
Numbers	9





# Introduction

Since the global outbreak of COVID-19 it has been a challenging time for many corporations and organisations. This has also been the case for the WakaWaka Foundation in 2021. Because of COVID-19 fundraising for WakaWaka is temporary not a top of mind issue for most people and organisations and also physical activities have been limited. Due to the restrictions in international travel, less WakaWaka's have been distributed as initially hoped. Emergency relief is one of the important priorities and this could require a certain level of stockage.

In 2021 we nevertheless accomplished the distribution of 1.390 WakaWaka power banks and 3.320 solar lights. In this way we reached out to victims and refugees in acute emergency situations and provide them with a safe and sustainable light source.

The WakaWaka Foundation favours enabling children to educate themselves after sunset -not having to resort to dirty, dangerous, polluting and expensive kerosene lamps and bad light candles. We do so by providing schools with WakaWaka lights, so they then can lend them out to the children. By creating 'solar libraries' (the WakaWaka's remaining legal property of the schools) we ensure the solar lights remain at the disposal of the children.

In 2021 almost 5.000 WakaWaka's have been distributed among those in need in Zimbabwe, Uganda, Rwanda, Honduras and Senegal.



## Our Mission

For light and connectivity. For daily use or as a backup. In the middle of the city or way off the beaten path. Access to power is a basic necessity in everybody's life.

It's the Foundation's mission to provide that access, in particular for the 1 billion people who are still dependent on dangerous and toxic kerosene lamps, candles, and pollution and expensive battery torches.

The WakaWaka Foundation aims to create sustainable impact by focusing on emergency relief and structural development in rural communities.

### Emergency relief

In emergency relief situations, for example during the aftermath of an earthquake, typhoon or a humanitarian conflict, access to light and power can make a huge difference in people's safety and wellbeing.

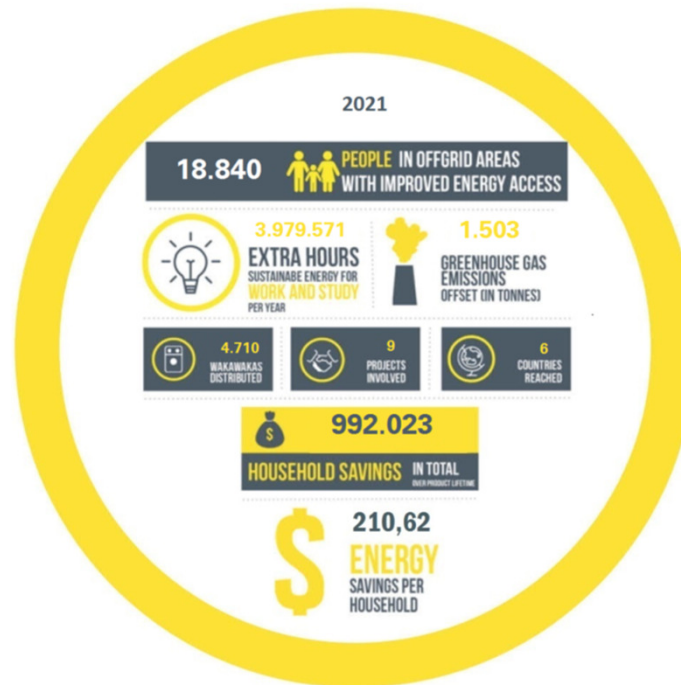
Direct after a natural disaster, solar light and power can help the search for survivors, and thanks to the mobile phone charging possibility of the WakaWaka Power people can stay in touch with loved ones and let them know they're alive.

Moreover, families that had to flee for conflicts in war-torn areas often end up in refugee camps that seldom have immediate and reliable access to light and power. In those situations, where no other economic model works, a donation is the most effective way to provide immediate and important relief.



# WakaWaka's Distributed

In off-grid areas in 2021





## Campaigns & Donations

In 2021 hundreds of WakaWaka power banks and solar lights have been distributed to acute emergency situations and to 'solar libraries' to enable children to do homework after sunset.

All of this was enabled by individuals, organisations and companies who helped with funding projects. In this 2021 annual report we highlight some of the projects the foundation has been sending WakaWaka's to. Moreover, we name multiple companies that contribute to the WakaWaka Foundation.

We are very grateful for all donations we received and therefore we would like to thank all individuals, organisations and companies that contributed to making the work of the WakaWaka Foundation possible. The main donations came from the following organisations:

### **It's about RoMi**

It's about RoMi is a company that designs lights and with their ecolabel 'Good and Mojo' they embark on their mission to create sustainable lighting and helping people at the same time.

It's about RoMi continues to be a structural supporter of the WakaWaka Foundation by donating 5% of the 'Good and Mojo' revenue to the Foundation and therefore enables people to get access to safe and sustainable light.

### **YouBeDo**

This online bookstore YouBeDo has been offering their customers the choice to determine to what charity their donation of a small percentage of their purchase amount will go to, at the expense of the reading of YouBeDo (not the customers).

### **Stand & Wende**

A company offering advice on how to invest, not only financially rewarding, but also in a sustainable way.





## Foundation Projects Highlighted

Like always the WakaWaka Foundation has been collaborating with relief organization knowledgeable 'on the ground' (as to prevent unnecessary costs and to be as efficient and cost effective as possible) and assigned the careful distribution. With the help of these organizations and companies it was possible to distribute almost 5.000 WakaWaka's.

For example, project Habitat in Uganda. Habitat solves the 'silent emergency' in Uganda, in which many millions suffer from poor housing conditions and deprivation. They work in partnership with beneficiaries, volunteers, public and private sector partners, civil society and governments to bring about change to build strong and stable communities. In 2021 1.100 power banks have been distributed to this project.

Unlike previous years, the projects in 2021 were relatively small but the number of executed projects compared to 2020 was higher. Several school projects in Africa including Uganda, Senegal, Rwanda, Zimbabwe have been executed.

Children in Africa are very eager to work on their homework. They realize that by learning, they are working on a better future. It has been proven that the school performance of children using a WakaWaka lamp improves significantly. Fortunately, more and more children get a WakaWaka lamp on loan from their school. It is the most efficient and sustainable solar lamp. A clean solar lamp of solid quality, which costs relatively little and provides many hours of bright and safe light.

Schooling is based on the idea that every life is full of possibilities. The special and beautiful thing about WakaWaka is that it has much more impact than just improving school performance. The family also benefits from the light source. And it has been shown that as girls continue to learn there is more awareness in the area of family planning. The difference between an uneducated woman and a woman with 12 years of education is four to five children. And it is precisely in countries where girls have the least opportunity for education that population growth is greatest.

A photograph of a man and a young boy sitting together, looking at a book. The man is on the right, wearing a dark jacket, and the boy is on the left, wearing a blue patterned sweater. They are both looking down at a yellow pencil or pen that the boy is holding. The background is dark and out of focus.

# Governance

In 2021 the governance structure of the Foundation has been changed. The supervisory board has been replaced by a board.

## **Board**

The board is assigned with the task of establishing policy and supervising the day to day running of the Foundation. The board meets approximately every four months.

Anneke Sipkens, Chairman  
Zita Schellekens  
Eppo Heemstra

May 5th, 2022



# Numbers

WakaWaka Foundation

Statement of income and expenses (€ 1.000)	2021	2020	Explanation on financials
Total income	48,3	218,2	Total income decreased in 2021 mainly due to the low activities as result of Covid-19
Project expenditures	79,2	147,2	Project expenditures consists mainly of the purchase of Lights and distribution costs.
Operating expenditures	3,4	2,1	Operating expenditures consist of administration-, internet-, and other office costs.
<b>Net result</b>	<b>-34,3</b>	<b>68,9</b>	

Balance sheet (€ 1.000)	31-dec-21	31-dec-20	Explanation on financials
Stock	175,0	175,0	At the end of 2021 the Foundation has 17.500 Lights Classic at stock. The stock will be distributed in 2022
Receivables & prepayments	1,4	1,5	
Cash at bank and in hand	51,4	84,8	
<b>Total assets</b>	<b>227,8</b>	<b>261,3</b>	
Designated funds	130,8	154,1	
Reserves	78,8	89,7	
Equity	209,6	243,8	
Current liabilities	18,2	17,5	
<b>Total liabilities</b>	<b>227,8</b>	<b>261,3</b>	

Financial figures are derived from the financial statements of 2021. The extensive figures can be requested.